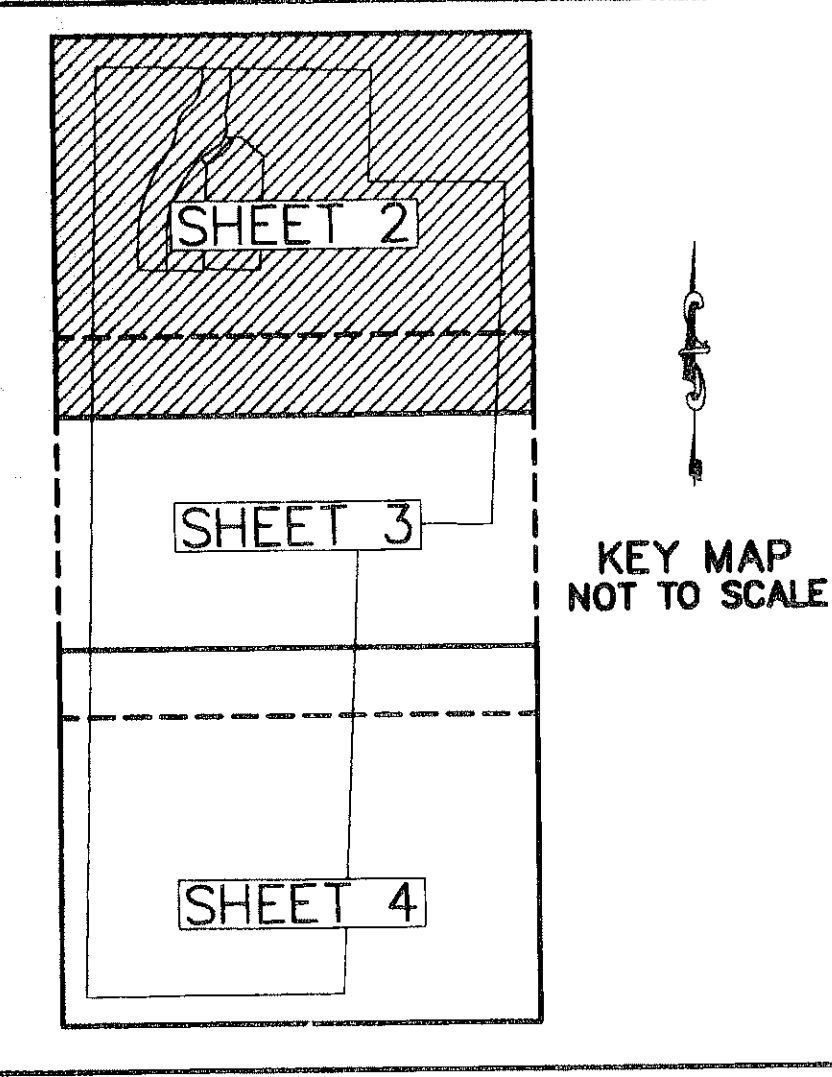


THIS INSTRUMENT PREPARED BY  
 DAVID P. LINDLEY  
 OF  
**CAULFIELD and WHEELER, INC.**  
 SURVEYORS - ENGINEERS - PLANNERS  
 7301-A WEST PALMETTO PARK ROAD, SUITE 100A  
 BOCA RATON, FLORIDA 33433 - (561)392-1991  
 FEBRUARY - 2008

0931-003

# ISOLA BELLA ISLES - PHASE I

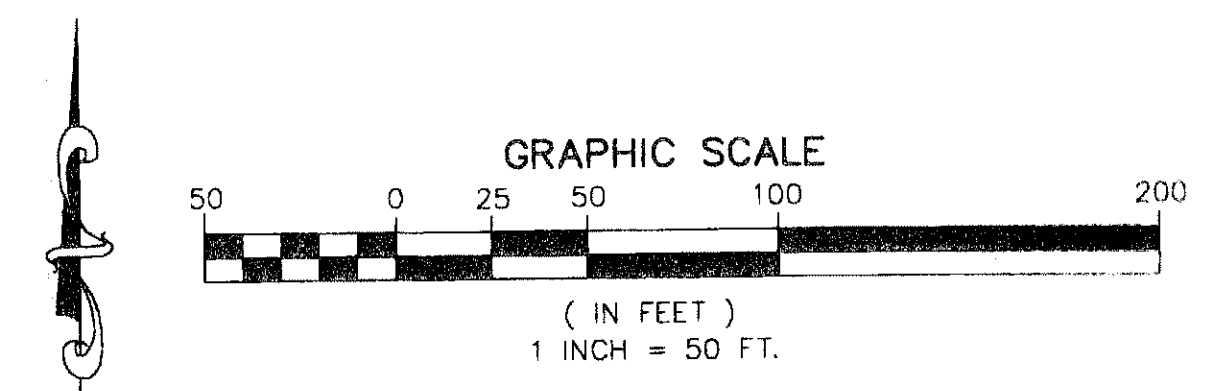
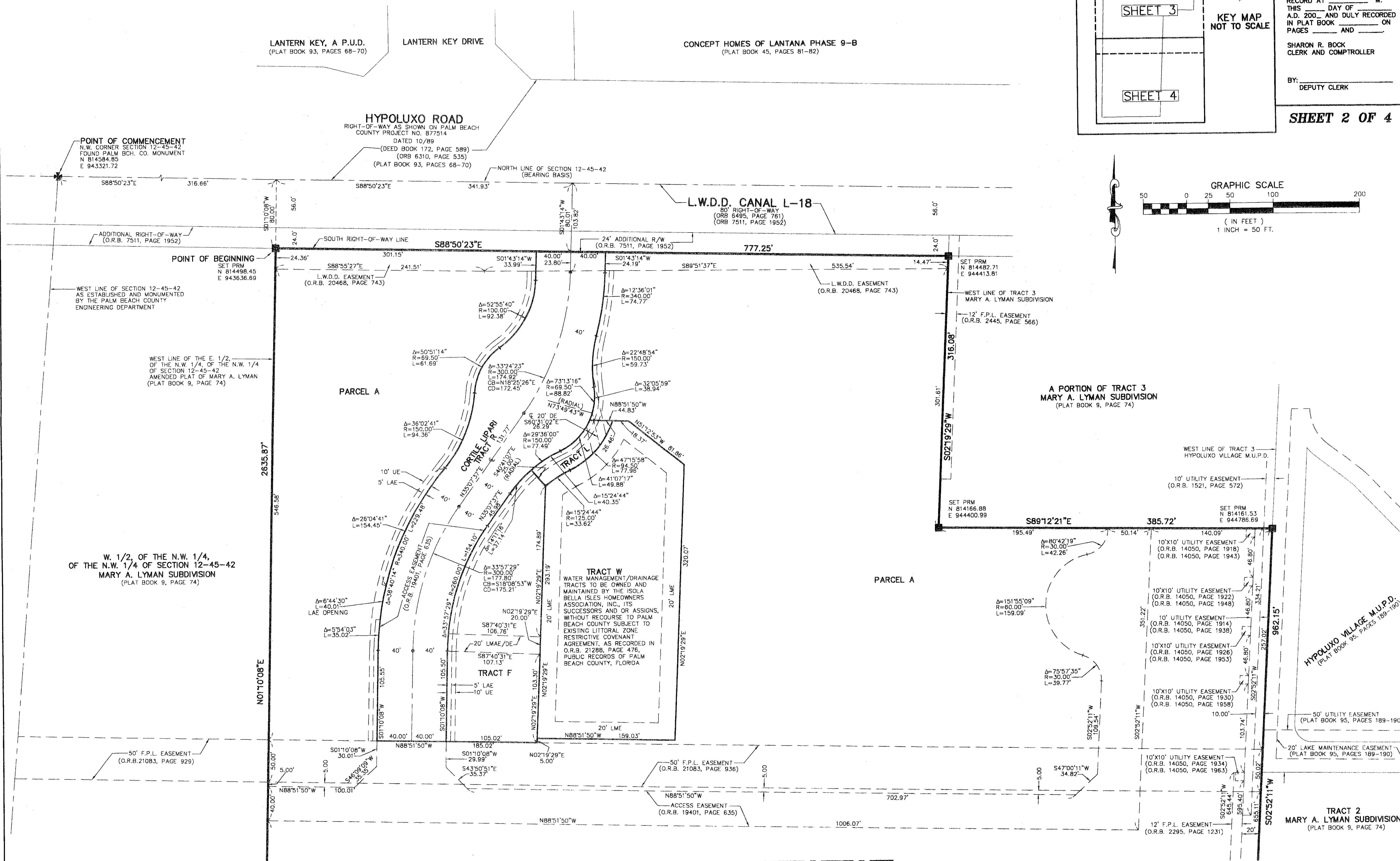
NICOLA, PUD  
 A PLANNED UNIT DEVELOPMENT BEING A REPLAT OF A PORTION OF THE AMENDED PLAT OF THE MARY A. LYMAN ET AL,  
 SUBDIVISION OF SECTION 12, TOWNSHIP 45 SOUTH, RANGE 42 EAST, ACCORDING TO THE PLAT THEREOF,  
 AS RECORDED IN PLAT BOOK 9, PAGE 74, PUBLIC RECORDS OF PALM BEACH COUNTY, FLORIDA



120

STATE OF FLORIDA  
 COUNTY OF PALM BEACH  
 THIS PLAT WAS FILED FOR  
 RECORD AT \_\_\_\_\_ M.  
 THIS \_\_\_\_\_ DAY OF \_\_\_\_\_  
 A.D. 2008, AND DULY RECORDED  
 IN PLAT BOOK \_\_\_\_\_ ON  
 PAGES \_\_\_\_\_ AND \_\_\_\_\_  
 SHARON R. BOCK  
 CLERK AND COMPTROLLER  
 BY: \_\_\_\_\_  
 DEPUTY CLERK

SHEET 2 OF 4



MATCH LINE SHEET 3 OF 4